



**QUICK  
FACTS**  

---

**STUDENT  
SUCCESS**  
**2011/2012**

Howard College makes every effort to help our students reach their maximum potential by integrating core concepts of critical thinking into our daily business and our classrooms. We have varied educational opportunities available to meet the ever-changing needs of all learners through our four campuses.

**2011-2012**

**District Awards by Type**

<i>Core Completers</i>	<i># of Degrees Awarded</i>	<i>Certificates Awarded</i>	<i>Total Awarded</i>
219	305	251	775

**2011-2012**

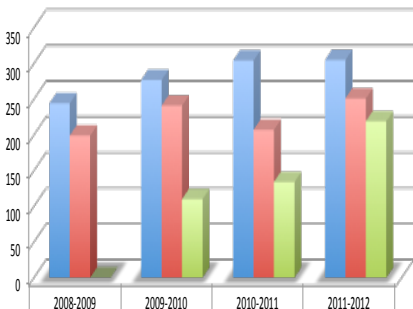
**Graduation & Persistence Rates**

**Howard SWCID State Avg**

Graduation & Persistence Rate Entering Cohort 2004	42.2%	48.1%	42.4%
3-yr Graduation Rate Entering Cohort 2007	19.1%	20.6%	12.8%
Transfers Entering Cohort 2005	41.6%	5.0%	27.8%
Non-Transfer Completers	11.8%	27.5%	8.9%
Non Completers	46.5%	67.5%	63.3%

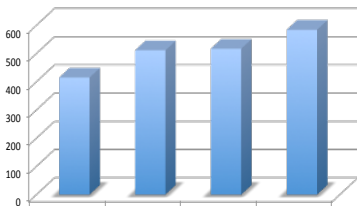
## Student Success Trends

### Awards Earned (Duplicated Count)



	2008-2009	2009-2010	2010-2011	2011-2012
Associate Degree	244	277	304	305
Certificate	199	241	207	251
Core Completer	0	110	134	219

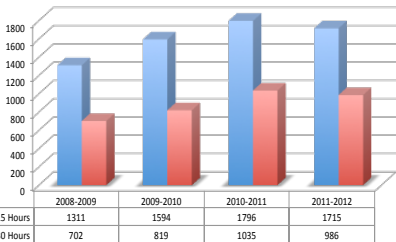
### Associate Degree/Certificate/Core Award Earned (Unduplicated Count)



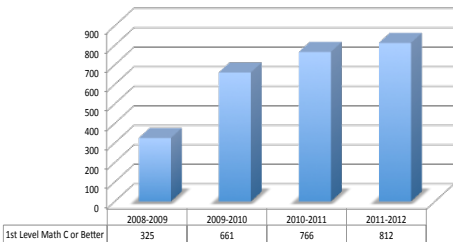
	2008-2009	2009-2010	2010-2011	2011-2012
Associate Degree/Certificate/Core	415	511	517	584

## 15 Credits - 1 Term

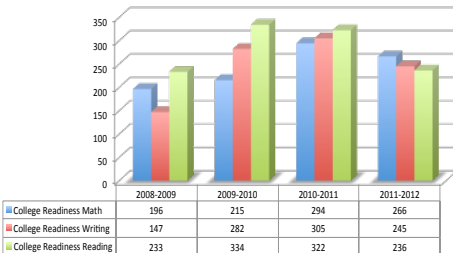
## 30 Credits - 1 Year



## 1st College Level Math C or Better



## Complete Developmental Work



---

## Excellence

### *Licensure Rate 2010-2011*

*Pass rate for programs whose graduates are required to pass a licensure exam to practice in a field:*

Cosmetology:	93%	Nurse, Registered:	87%
Dental Hygienist:	88%	Nurse, LVN:	97%
Respiratory Care:	50%		
Radiologic Technology:	100%		
Emergency Medical Services:	100%		
Surgical Technology:	100%		

---

## Significant Recognitions 2011-2012

Number of newly inducted members in Phi Theta Kappa:	158
Number of students eligible for Phi Theta Kappa membership:	793

---

## Success Trend

### **Graduates Employed and/or Enrolled In Four-year Institution the Following Fall**

<b>Year</b>	<b>Institution</b>	<b>Peer Group</b>
FY2006	82.2%	80.8%
FY2009	82.0%	85.8%
FY2010	81.8%	84.3%

### **Percent of Graduates from Preceding FY Who Were Employed or Enrolled in Four-Year Institution the Following Fall**

<b>FY2010</b>	<b>Institution</b>	<b>Peer Group</b>
Total	81.8%	84.3%
Employed	59.9%	64.7%
Enrolled	9.7%	9.7%
Both Emp & Enr	12.3%	9.9%

---